

# The Homeowner's Guide to GAF Timberline Solar™: Power, Protection & Value—Seamlessly Integrated

Welcome to your comprehensive guide to **GAF Timberline Solar™** technology, brought to you by RGB Construction, South Jersey's premier **GAF Master Elite Contractor**. This document will walk you through everything you need to know about this revolutionary solar roofing system that combines energy production with superior protection for your home. From understanding local incentives and potential savings to installation processes and answering your most pressing questions, we've designed this guide to provide you with actionable insights that other installers often overlook. Whether you're concerned about aesthetics, durability, cost, or performance in South Jersey's climate, you'll find expert analysis and real-world examples to help you make an informed decision about powering your home with clean, renewable energy.

**By RGB Construction**



# Why Roofing + Solar Is the Future (And Why Now Is the Time)

South Jersey homeowners are facing rising energy costs at an unprecedented rate. Over the past five years, New Jersey utility rates have increased by an average of 4.8% annually, outpacing inflation and putting additional strain on household budgets. For the average Cherry Hill homeowner, this translates to approximately \$250-350 in additional energy costs each year—with no relief in sight as the power grid continues to age and demand increases.

The good news? New Jersey offers some of the most generous solar incentives in the nation, making now the perfect time to invest in solar technology:

## NJ SREC-II Program

New Jersey's Successor Solar Renewable Energy Certificate program provides financial incentives for every kilowatt-hour of electricity your solar system generates, potentially worth \$90-110 per megawatt-hour.

## Net Metering

Excess electricity your system produces is fed back to the grid, earning you credits on your utility bill at the full retail rate—essentially using the grid as your battery.

## Federal Tax Credit

The Investment Tax Credit (ITC) allows you to deduct 30% of the cost of installing a solar energy system from your federal taxes, with no upper limit through 2032.

## Property Tax Exemption

Solar installations in New Jersey are exempt from property tax assessment increases despite the value they add to your home.

## Local Savings Potential

Town	Avg. Monthly Electric Bill	Est. Annual Savings	20-Year Savings
Cherry Hill	\$185	\$1,850	\$62,000+
Marlton	\$192	\$1,920	\$64,500+
Voorhees	\$178	\$1,780	\$59,800+
Medford	\$195	\$1,950	\$65,500+

Common myths often prevent homeowners from taking advantage of these benefits. Let's address them directly:

### "Solar is too expensive"

With today's incentives and financing options, many South Jersey homeowners achieve positive cash flow from day one, with monthly solar payments lower than their previous utility bills.

### "I'll need to replace my roof first"

With GAF Timberline Solar™, you're getting a new roof AND solar in one installation—solving two problems simultaneously without additional labor costs.

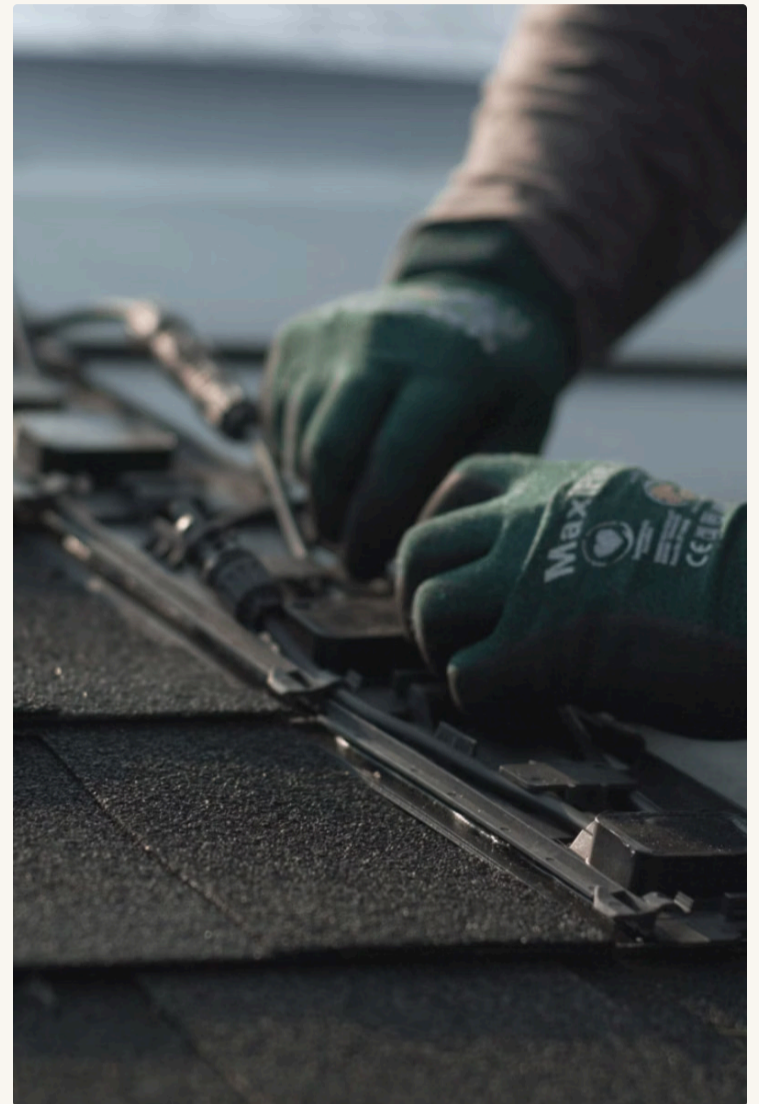
### "Solar doesn't work well in New Jersey"

New Jersey actually ranks 7th nationally for solar installation capacity, with our systems producing at 93% efficiency compared to sunnier states like Arizona.

# Why GAF Timberline Solar™ Beats Traditional Solar Panels

When comparing GAF Timberline Solar™ to conventional rack-mounted solar panels, the differences become immediately apparent in terms of aesthetics, durability, and overall home protection. Traditional solar panels sit on mounting hardware that requires dozens of roof penetrations—each representing a potential point of failure and water intrusion. GAF's revolutionary system takes a fundamentally different approach by integrating the solar technology directly into the roofing material itself.

Feature	GAF Timberline Solar™	Traditional Solar Panels
Installation Method	Direct-to-deck nailable installation	Rack-mounted requiring penetrations
Water Protection	Fully integrated water-shedding design	Relies on flashings around penetrations
Wind Resistance	130 mph rating	Typically 45-90 mph
Aesthetics	Low-profile, integrated with roofline	Elevated 4-6" above roof surface
Warranty Coverage	Single system warranty (25-year)	Separate warranties for roof and solar
Installation Time	3-7 days (complete roof + solar)	1-2 days solar + separate roof time



"The game-changing aspect of Timberline Solar is that the shingles themselves capture energy while maintaining the water-shedding integrity of a traditional roof. As a Master Elite contractor, we've seen firsthand how this eliminates the main failure points of conventional solar installations."

— RGB Construction

## The Technical Advantage

GAF Timberline Solar™ shingles represent a true technological breakthrough. Unlike conventional solar panels that sit on racks above your existing roof, these energy-generating shingles become your roof. The innovative design allows for direct nailing to the roof deck using standard roofing nails and techniques—the same proven methods that have protected homes for decades.

### Direct-to-Deck Installation

Each shingle nails down like traditional roofing, with no need for special mounting hardware or penetrations through your roof's water barrier.

### Engineered Water Channels

Precision-designed water channels direct rainfall away from electrical components while maintaining the roof's primary function of protecting your home.

### Low Profile Design

At only a quarter-inch thick, these shingles blend seamlessly with standard Timberline shingles, maintaining your home's architectural integrity.

# Real Homeowner Results: GAF Solar ROI in South Jersey

Nothing speaks more powerfully than real results from actual South Jersey homeowners who have made the transition to GAF Timberline Solar™. Here are three case studies that demonstrate the performance and return on investment that local residents are experiencing with their RGB-installed systems.

1	2	3
<p><b>The Johnsons - Cherry Hill (4 bedroom colonial)</b></p> <p><b>System Size:</b> 8.2 kW (41 solar shingles)</p> <p><b>Monthly Electric Bill Before:</b> \$210</p> <p><b>Monthly Electric Bill After:</b> \$15 (service fees only)</p> <p><b>Annual Savings:</b> \$2,340</p> <p><b>Projected 25-year Savings:</b> \$87,500</p> <p>"We were initially concerned about how the solar would look on our historic-style home. The GAF system blends so perfectly with our roof that neighbors don't even realize we have solar until we tell them. And our electric bill is essentially zero most months!" - Sarah Johnson</p>	<p><b>The Patels - Marlton (5 bedroom contemporary)</b></p> <p><b>System Size:</b> 10.4 kW (52 solar shingles)</p> <p><b>Monthly Electric Bill Before:</b> \$275</p> <p><b>Monthly Electric Bill After:</b> \$20-35</p> <p><b>Annual Savings:</b> \$2,880</p> <p><b>Projected 25-year Savings:</b> \$108,000</p> <p>"With three teenagers constantly charging devices and our electric vehicles, our utility bills were astronomical. Since installing GAF Solar, we're producing more than enough energy for our needs, even selling excess back to the grid." - Raj Patel</p>	<p><b>The Simpsons - Voorhees (3 bedroom ranch)</b></p> <p><b>System Size:</b> 6.8 kW (34 solar shingles)</p> <p><b>Monthly Electric Bill Before:</b> \$185</p> <p><b>Monthly Electric Bill After:</b> \$10-25</p> <p><b>Annual Savings:</b> \$1,920</p> <p><b>Projected 25-year Savings:</b> \$72,000</p> <p>"As retirees on a fixed income, energy costs were becoming a real concern. Our GAF system has eliminated that worry while adding significant value to our home. The RGB team made the whole process remarkably simple." - Bob Simpson</p>

## [GAF Energy Timberline Solar Sell Sheet](#)



## RGB Construction's Proven Track Record

As South Jersey's premier GAF Master Elite contractor, RGB Construction has built a reputation for excellence in both traditional roofing and solar installations. Our dedication to quality and customer satisfaction is reflected in our exceptional ratings:

- 4.9/5 stars on Google (112 reviews)
- A+ Rating with the Better Business Bureau
- Top 3% of GAF contractors nationwide

Our team has completed specialized training directly from GAF to ensure perfect installation of the Timberline Solar™ system, making us one of the few certified installers in the South Jersey region.



# What Other Installers Aren't Telling You

When considering solar for your home, there's critical information that many installers—especially those who only specialize in solar panel installation but not roofing—often fail to disclose. These gaps in information can lead to significant issues down the road, affecting both your roof's integrity and your solar system's performance.

## The Penetration Problem

Standard solar panel installations require drilling 30-40 holes through your roof membrane. Each hole creates a potential leak point, even with proper flashing. Over a 25-year period, thermal expansion and contraction stress these penetration points, often leading to water intrusion.

## The Warranty Gap

When solar panels and roofing are installed by different companies, you're left with split responsibility. If a leak develops, the solar company may blame the roofer and vice versa, leaving you caught in the middle of a warranty dispute with water damaging your home.

## The Ventilation Oversight

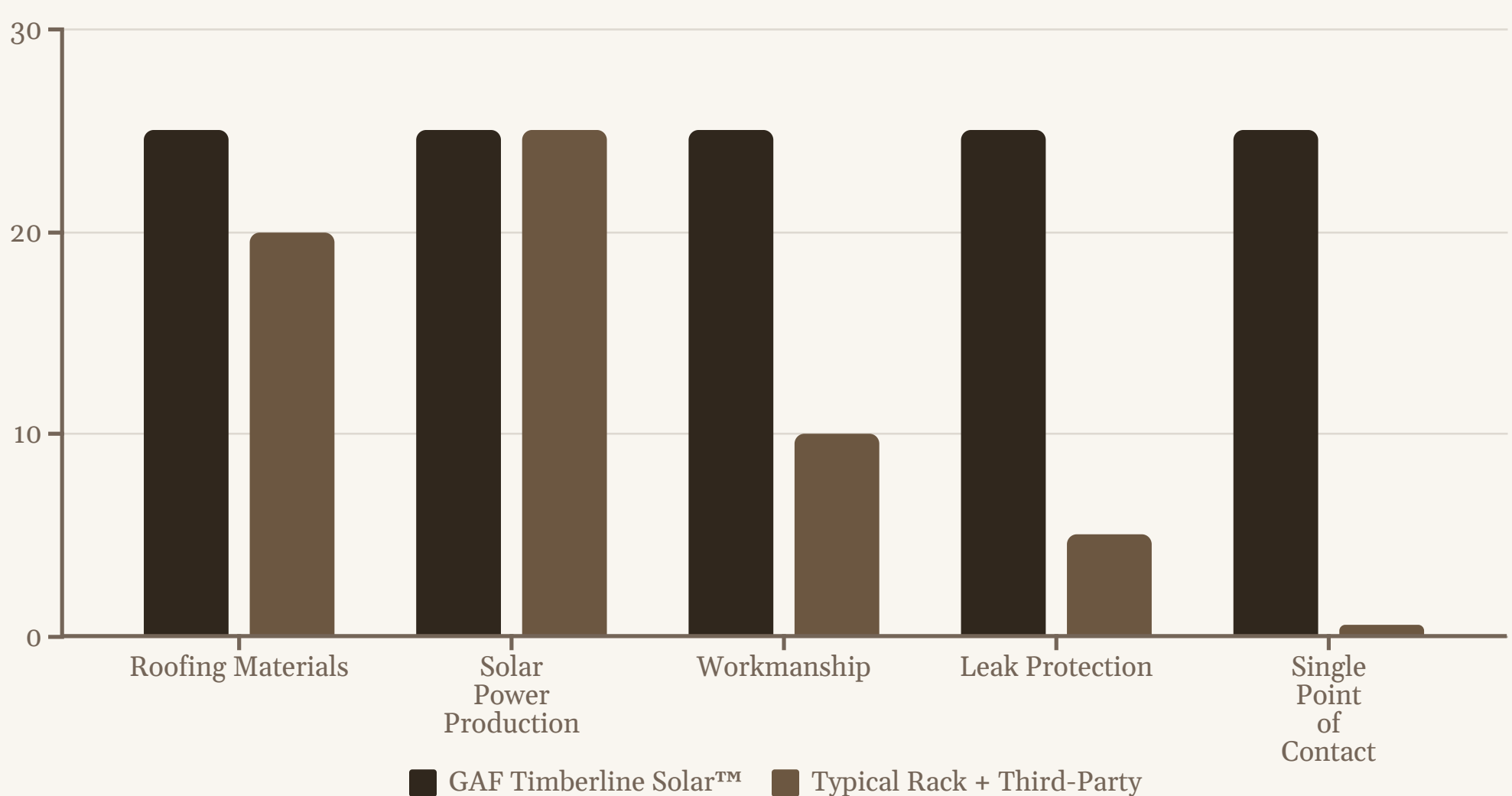
Proper roof ventilation is critical for attic temperature regulation and preventing moisture buildup. Many solar-only installers place panels without considering vent placement, often blocking or compromising existing ventilation systems.

## Common Installation Mistakes by Solar-Only Companies

Our repair team has unfortunately had to fix numerous problems created by companies that specialize only in solar installation. These issues typically arise from a lack of comprehensive roofing knowledge:

- **Improper flashing techniques** around penetrations, often using sealant instead of proper step flashing
- **Incorrect panel placement** that disrupts water flow patterns on the roof surface
- **Adding excessive weight** to specific roof areas without assessing structural capacity
- **Improper wire management** leading to abrasion against roofing materials
- **Failing to address existing roof issues** before installation, trapping problems beneath panels

## The Integrated Warranty Advantage



As a GAF Master Elite Contractor, RGB Construction offers the **GAF Golden Pledge® warranty** that covers both your roof and solar system comprehensively. This means one company is responsible for the entire system's performance, eliminating finger-pointing and providing you with a single point of contact for any issues that might arise over the 25-year warranty period.

⊗ **WARNING:** Installing traditional solar panels on an aging roof is a costly mistake. When the roof eventually needs replacement, the solar system must be removed and reinstalled—an expense of \$3,000-\$5,000 that's rarely covered by warranty. GAF Timberline Solar™ eliminates this concern entirely by combining both systems into one.

# Understanding the Costs (And How to Lower Them)

Homeowners considering GAF Timberline Solar™ often wonder about the investment required and how it compares to traditional roofing and solar options. Transparency is a core value at RGB Construction, so we believe in providing clear, straightforward information about costs and the factors that influence them.

## Cost Breakdown for GAF Timberline Solar™

The total investment for a GAF Timberline Solar™ system typically falls between \$25,000 and \$45,000 for most South Jersey homes, depending on several key factors:

### System Size

The number of solar shingles needed to meet your energy goals (typically 6-12 kW for most homes)

### Roof Complexity

Multiple roof planes, steep pitches, and unique architectural features may require additional labor

### Electrical Requirements

Upgrades to electrical panels or wiring may be necessary for older homes

### Removal Needs

Costs associated with removing existing roofing materials

## What's Included:

- **Complete roof replacement** with premium Timberline shingles
- **Solar energy system** sized to your home's needs
- **All necessary electrical equipment** (inverters, etc.)
- **Professional installation** by GAF-certified team
- **Permitting and utility interconnection** paperwork
- **25-year comprehensive warranty** coverage
- **System monitoring** equipment and setup

☐ **Remember:** When comparing costs, consider that GAF Timberline Solar™ replaces your entire roof—not just adds panels to it. For most homes needing roof replacement within 5 years, this represents significant savings versus doing each project separately.

## New Jersey-Specific Incentives

# 30%

### Federal Tax Credit

Direct reduction of your federal tax liability—for a \$30,000 system, that's \$9,000 back

# \$90

### NJ SREC-II Value

Per megawatt-hour your system produces, generating ongoing income

# \$0

### Sales Tax

New Jersey exempts solar energy systems from state sales tax

# 100%

### Net Metering

Credit for excess energy at retail rates from your utility provider

## Simple ROI Calculator

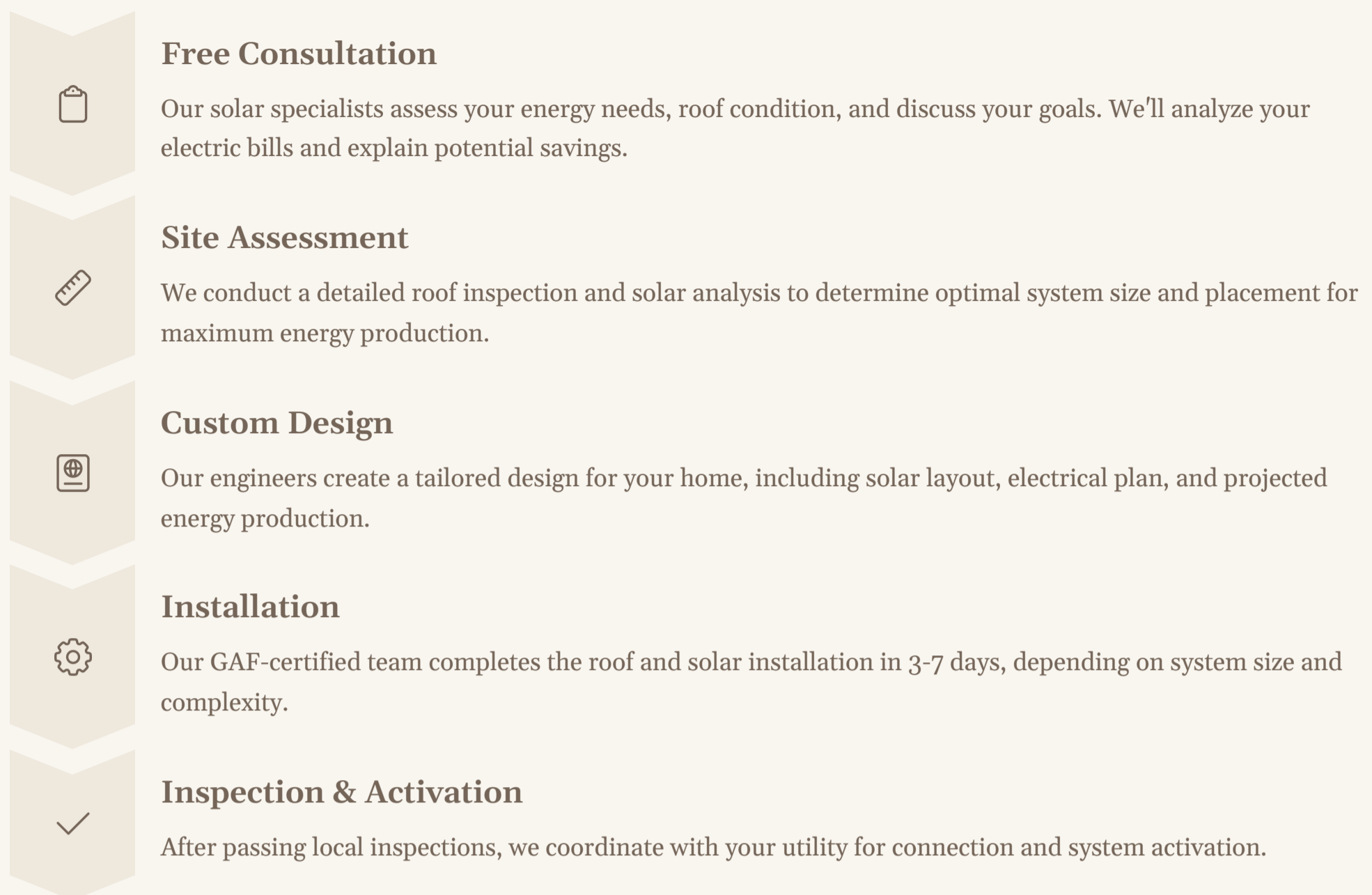
Current Monthly Electric Bill	Annual Electric Cost	Estimated Annual Solar Savings	System Payback Period
\$150	\$1,800	\$1,620 (90%)	8-10 years
\$200	\$2,400	\$2,160 (90%)	7-9 years
\$250	\$3,000	\$2,700 (90%)	6-8 years
\$300	\$3,600	\$3,240 (90%)	5-7 years

Financing options make GAF Timberline Solar™ even more accessible. Through our partnerships with specialized solar lenders, many homeowners can install a complete system with little to no money down. Monthly payments are often less than your current electric bill, creating immediate positive cash flow. RGB Construction can guide you through financing options including:

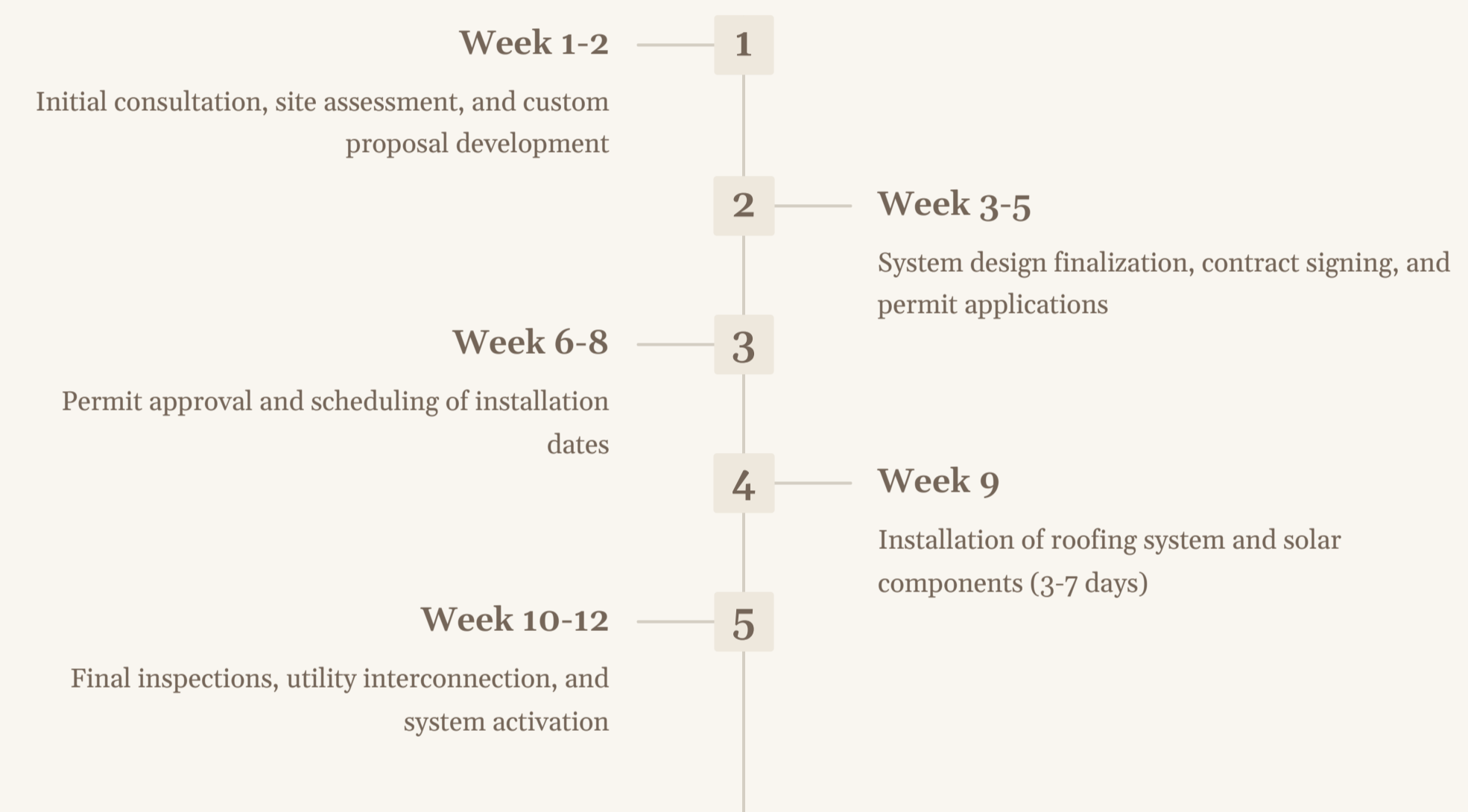
- **Solar loans** with terms from 5-25 years and rates as low as 2.99%
- **Home equity financing** that may offer tax-deductible interest
- **GAF's own financing program** with special terms for qualified buyers

# The RGB Installation Process: What to Expect

When you choose RGB Construction for your GAF Timberline Solar™ installation, you're partnering with South Jersey's most experienced team. Our proven process ensures a smooth, transparent experience from initial consultation to system activation. Here's what to expect when you work with us:



## The Installation Timeline



## Our Solar Promise

At RGB Construction, we stand behind every GAF Timberline Solar™ installation with our exclusive guarantees that go beyond the manufacturer's warranty.

1

### On-Time Installation Guarantee

We'll complete your installation on schedule or pay you \$100 for each day we're delayed (subject to weather conditions).

2

### Leak-Free Assurance

If your roof leaks during the warranty period, we'll repair it at no cost within 24 hours of notification.

3

### Clean Jobsite Commitment

We use advanced magnetic tools to remove all nails and debris from your property, or we'll pay for professional cleaning.

Throughout the entire process, you'll have a dedicated project manager as your single point of contact, ensuring clear communication and answering any questions that arise. We handle all paperwork related to permits, inspections, utility connections, and incentive applications—making the process as hassle-free as possible for you.

# Solar Shingles FAQs (Local + Technical)

As South Jersey's leading GAF Timberline Solar™ installer, we've fielded hundreds of questions from homeowners considering making the switch to solar. Here are the most common questions—and straightforward answers—specific to our local area and the GAF system.

## How do GAF solar shingles handle snow in NJ winters?

GAF Timberline Solar™ shingles have a smooth glass surface that helps snow slide off more readily than traditional asphalt shingles. The dark color also absorbs heat, helping to melt snow. In heavy accumulation, snow will temporarily reduce production, but the annual energy calculations we provide already account for typical NJ winter conditions. The system is engineered to withstand the weight of snow loads common in our region.

## What's the wind resistance rating for these solar shingles?

GAF Timberline Solar™ shingles are rated for winds up to 130 mph, exceeding South Jersey's building code requirements. They've undergone rigorous testing to ensure they maintain their integrity during severe weather events, including the coastal storms we occasionally experience. The direct-to-deck nailing system provides superior wind resistance compared to rack-mounted solar panels.

## What happens during a power outage?

Standard grid-tied solar systems, including GAF Timberline Solar™, automatically shut down during power outages as a safety measure to prevent backfeeding electricity to the grid where utility workers may be making repairs. However, we offer battery backup options that can be integrated with your system to provide critical power during outages. The most popular option among our South Jersey customers is the Tesla Powerwall, which can power essential circuits for 1-3 days depending on your energy usage.

## Can I use a backup generator with my solar system?

Yes, your GAF solar system can coexist with a backup generator. We can design the system to work with existing generators or new installations. During a power outage, the generator would typically power your home directly while the solar system remains off. When grid power is restored, your solar system automatically resumes operation. For sophisticated integration allowing both to operate simultaneously, we offer advanced solutions using automatic transfer switches.

## Will my HOA allow this?

New Jersey has strong solar access laws that prevent HOAs from prohibiting solar installations. Specifically, N.J.S.A. 45:22A-48.2 states that associations cannot forbid the installation of solar collectors on roofs. While they may impose reasonable restrictions regarding placement, these restrictions cannot significantly increase cost or decrease efficiency. GAF Timberline Solar™ is particularly HOA-friendly due to its low profile and integrated appearance. We've successfully installed systems in even the most stringent HOA communities throughout South Jersey.

## How do Timberline Solar shingles compare to Tesla solar roof?

Both are integrated solar roofing products, but there are significant differences. GAF Timberline Solar™ typically costs 15-25% less than Tesla's system while offering comparable energy production. GAF's system can be installed in 3-7 days versus Tesla's longer installation timeline. Additionally, GAF has a nationwide network of certified installers (like RGB Construction), ensuring prompt service and support. Tesla's limited installation workforce has resulted in lengthy delays for many New Jersey homeowners.

## Additional Common Questions

### What is the actual energy output compared to traditional panels?

GAF Timberline Solar™ shingles have an efficiency rating of 22.6%, comparable to premium traditional solar panels. While the total system production depends on your specific roof configuration, a properly designed GAF system will produce equivalent energy to a traditional panel system of the same rated capacity.

### Do solar shingles require special maintenance?

No special maintenance is required. Like traditional panels, occasional rain typically keeps them clean. In periods of drought or pollen season, a simple rinse with a garden hose from the ground is sufficient. We recommend an annual professional inspection to ensure optimal performance.

### How long do solar shingles last?

GAF Timberline Solar™ shingles are warranted for 25 years for both power output and as a roofing product. They're designed to maintain at least 84.8% of their original power output after 25 years, outperforming many traditional solar panels.

### Can you install on my existing roof?

GAF Timberline Solar™ is a complete roofing system that replaces your existing roof. We remove your current roofing material and install the entire integrated system. This ensures optimal performance and eliminates future concerns about having to remove and reinstall solar to replace an aging roof.

### How does billing work with my utility company?

New Jersey has excellent net metering policies. When your system produces excess electricity, it flows back to the grid, and you receive credits on your bill at the full retail rate. These credits offset electricity you draw from the grid when your system isn't producing (like at night). You'll still receive a monthly bill, but it will only charge for the net electricity used plus a basic connection fee.

### What's the payback period for South Jersey homeowners?

Most of our customers see payback periods of 7-10 years, though this varies based on system size, energy usage, and available incentives. After this period, the system effectively generates free electricity for the remainder of its 25+ year lifespan.

#### 📌 Important Resources:

- GAF Warranty Registration: [www.gaf.com/warranty](http://www.gaf.com/warranty)
- NJ Net Metering Information: [njcleanenergy.com/net-metering](http://njcleanenergy.com/net-metering)
- Federal Tax Credit Guidelines: [energystar.gov/about/federal-tax-credits](http://energystar.gov/about/federal-tax-credits)

# What Makes RGB Construction Different

When selecting a contractor for your GAF Timberline Solar™ installation, experience and credentials matter. RGB Construction stands apart from other South Jersey contractors in several key ways that ensure your investment is protected and your expectations are exceeded.

## GAF Master Elite® Certification

Only 2% of roofing contractors nationwide have earned GAF's Master Elite® designation. This prestigious certification is awarded only to contractors who demonstrate:

- Proper licensing and adequate insurance
- A proven reputation for providing quality roofing services
- Commitment to ongoing professional training
- Commitment to excellent customer service

As a Master Elite® contractor, RGB is authorized to offer GAF's strongest warranties and has completed specialized training specifically for Timberline Solar™ installation.

"Working with RGB Construction gave us confidence throughout the entire process. Their attention to detail and communication were exceptional, and the finished system looks amazing while producing even more energy than projected."

— Michael Thornton, Cherry Hill homeowner



## 15+

**Years Experience**

Serving South Jersey homeowners since 2008

## 500+

**Roof Installations**

Completed throughout Cherry Hill and surrounding areas

## 75+

**Solar Systems**

Successfully installed and activated

## 4.9

**Google Rating**

Based on 112 verified customer reviews

## Our Key Differentiators



### Exclusive GAF Solar Certification

One of the first contractors in South Jersey to complete GAF's rigorous Timberline Solar™ training program, ensuring perfect installation technique.



### In-House Installation Teams

Unlike competitors who subcontract work, our installations are performed by our own trained employees who specialize in both roofing and solar technology.



### Local Expertise

Deep understanding of South Jersey's climate conditions, building codes, permit requirements, and utility interconnection processes.



### Comprehensive Service

From initial consultation through permit handling, installation, inspection, and ongoing support—we handle every aspect of your project.

## How We Compare to Local Competitors

Feature	RGB Construction	Emmons Roofing	Other Solar-Only Companies
GAF Master Elite® Certification	✓	Limited	☒
Specialized GAF Solar Training	✓	☒	☒
Combined Roof + Solar Warranty	25 Years	Varies	Solar Only
In-House Installation Teams	✓	Mixed	Often Subcontracted
Post-Installation Support	Comprehensive	Limited	Varies
Years in Business	15+	10+	Typically < 5

Our commitment to excellence extends beyond installation. We provide ongoing support to ensure your system performs optimally for decades to come. This includes:

- **Annual system performance reviews** to verify energy production meets expectations
- **Monitoring system setup** that alerts you (and us) to any performance issues
- **Priority service** for any warranty claims or system adjustments
- **Educational resources** to help you maximize the benefits of your new solar roofing system

# Next Steps: From Curiosity to Clean Energy

Your journey toward energy independence and significant utility savings is just a conversation away. RGB Construction makes it easy to explore whether GAF Timberline Solar™ is the right solution for your South Jersey home. Our no-pressure consultation process is designed to provide you with all the information you need to make an informed decision.

## What to Expect from Your Free Consultation

- **Personalized assessment** of your home's solar potential
- **Review of your current energy bills** to calculate potential savings
- **Custom system design** showing what your home would look like with GAF Timberline Solar™
- **Detailed financial analysis** including incentives, tax credits, and financing options
- **Clear explanation** of the installation process and timeline
- **Answers to all your questions** from our GAF-certified solar specialists

### Schedule Online

Visit [www.rgbconstruction.com/solar](http://www.rgbconstruction.com/solar) to book a consultation at your convenience using our easy online calendar.

### Call Directly

Speak with a solar specialist by calling (856) 264-9093 between 8:00 AM and 7:00 PM, Monday through Saturday.

### Scan QR Code

Use your smartphone camera to scan the QR code on the right side of this page to be taken directly to our scheduling page.



"The solar shingles have transformed not just our energy bills, but our whole relationship with energy consumption. We're producing clean power and saving money every day. It's the best home improvement decision we've ever made."

— The Williams Family, Medford

### ✔ Limited Time Offer

Schedule your consultation before the end of the month and receive a complimentary home energy audit (\$450 value) that identifies additional ways to maximize your energy efficiency and solar investment.

## Our Credentials

- GAF Master Elite® Certified Contractor
- GAF Solar™ Certified Installer
- NJ Clean Energy Program Partner
- Better Business Bureau A+ Rating
- Fully Licensed & Insured: NJ HIC #13VH05374200

## Frequently Asked Next Steps Questions

### • How long does the consultation take?

Initial consultations typically last 45-60 minutes, either virtually or in your home, depending on your preference.

### • What information should I have available?

If possible, have a recent electric bill handy so we can accurately calculate your potential savings.

### • Is there any obligation after the consultation?

Absolutely none. Our goal is to educate and inform, not to pressure. Take all the time you need to make your decision.

### • How soon could installation begin?

After signing an agreement, typical lead time is 6-8 weeks for permitting and scheduling, though this varies seasonally.

Your journey toward energy independence and a more sustainable home begins with a simple conversation. Contact RGB Construction today to discover how GAF Timberline Solar™ can transform your home, reduce your energy costs, and increase your property value while contributing to a greener future for South Jersey.

[Schedule Your Free Consultation](#)

[Call \(856\) 264-9093](tel:(856)264-9093)